



Property Description

Ridge View Estate is one of Barbados' most sought-after developments with a long-standing reputation for being an excellent family neighbourhood and holding its value in the real estate market. Ridge View #15 is a lovely three-bedroom townhouse set over two levels with an open-plan living and kitchen area that flows out onto the back patio. This property has many amenities as does the development but the plunge pool on the back patio is a perfect place to entertain and enjoy the cool breezes coming from the east of the island.

The master bedroom offers an ensuite bathroom and bedrooms two and three share a bathroom with an additional powder room for guests. The bedrooms are also air-conditioned. The estate has many amenities such as communal gardens and playground, tennis courts and pool all overlooking the scenic St. George Valley and Barbados countryside.

Ridge View Estate is ideally located just 5 minutes away from The Barbados Golf Club in Durants, shopping in Wilbey and 10 minutes from

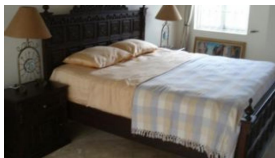
beaches such as Accra, Carlisle Bay and Maxwell Beach. Truly a great property for someone looking to invest in a time test development, contact us today to schedule a viewing.



Quick Summary

~~Bedrooms:~~ Amenities

- 5 Minutes To Bridgetown
- A/C - Entire House
- Breezy
- Ceiling Fan - Select Rooms
- Centrally Located
- Country Views
- Established Neighbourhood
- Jacuzzi / Hot Tub
- Kitchen
- Onsite Parking
- Patio
- Plunge Pool
- Private Development
- Short Drive To Beach
- Tennis Court without lighting
- Television
- Wi-Fi Internet



Source URL: <https://realtorluxurystatesales.com/properties/ridgeview-estate-15-frere-pilgrim-christ-church-barbados>