

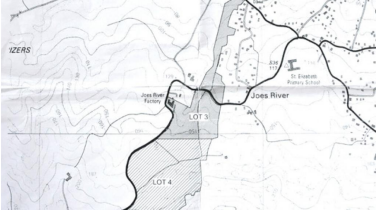
Property Description

Joe's River Development offers four lots of land offering a total parcel of approximately 72 Acres or 3,000,000+ Sq. Ft. The land is set over a gently sloping hillside and beachfront land on the picturesque East Coast. Stunning views of the Atlantic Ocean and constant breeze off the ocean allow for a fantastic development opportunity for an investor looking to build a community minutes away from surfing in Bathsheba and many local restaurants.

Contact our real estate team for more information on this one-of-a-kind real estate investment.

Interested in other properties for sale or rent in Barbados? Realtors Limited real estate portfolio features properties in many of Barbados top West Coast developments such as Sandy Lane Estate, Royal Westmoreland, Port Ferdinand, St. Peters Bay and Port St. Charles. On the South Coast of the island The Condominiums at Palm Beach, Sapphire Beach, The Sands, Rockley Resort and Harmony Hall Green offer great investment potential. Our team specializes in Residential and Commercial real estate sales, whether you are looking for Beachfront or Inland, Condominium

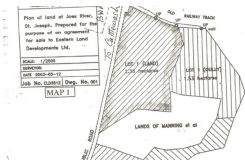
or House / Villa, the Realtors Limited sales team is here to ensure you purchase the perfect slice of Caribbean paradise.



Quick Summary

Beachfront 3,000 sq ft. Amenities

- Beachfront
- Breezy
- Country Views
- Ocean View
- Short Drive To Beach
- Subdivision Available



Source URL: <https://realtorsluxurystatesales.com/properties/joes-river-land-development-st-joseph-barbados>