



Quick Summary

Land Area: 7,954 sq. ft.

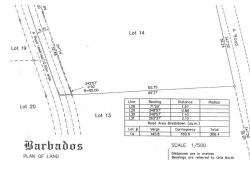
Property Description

Lot 14 at Waterhall Polo Field is slightly elevated and catches the cooling trade winds while enjoying the distant sea views, and uninterrupted views of the polo field. The Waterhall Polo Field development is within 10 minutes drive to beautiful beaches, golf courses, shopping facilities, dining and entertainment establishments, boutiques, commercial activity and the many other amenities provided on the West Coast. It is within walking distance to the newly developed Apes Hill Golf Club with spectacular residences, and condos.

Interested in other properties for sale or rent in Barbados? Realtors Limited real estate portfolio features properties in many of Barbados top West Coast developments such as Sandy Lane Estate, Royal Westmoreland, Port Ferdinand, St. Peters Bay and Port St. Charles. On the South Coast of the island The Condominiums at Palm Beach, Sapphire Beach, The Sands, Rockley Resort and Harmony Hall Green offer great investment potential. Our team specializes in Residential and Commercial real estate sales, so whether you are looking for Beachfront or Inland, Condominium or House / Villa, the Realtors Limited sales team is here to ensure you purchase the perfect slice of Caribbean paradise.

Property Type: Amenities

5 Minutes To Hometown
Breezy
Centrally Located
Country Views
Established Neighbourhood
Flat Lot
Gated Community
Short Drive To Beach



Source URL: <https://realtorsluxuryestatesales.com/properties/apes-hill-polo-field-14-waterhall-st-james-barbados>